



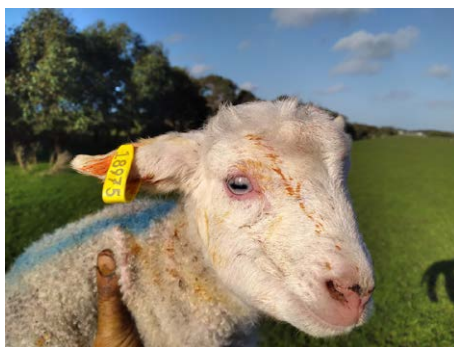
# Becoming a Nudie

The pros and cons of switching to shedding sheep

## PROGRAM

**HAMILTON - 13 JULY 2022**

Meridian Agriculture is organising and hosting a free event on behalf of Cashmore Park, called "Becoming a Nudie". With Australian sheep producers becoming increasingly interested in sheep breeds that do not require crutching, mulesing or shearing, these special events will aid producers to think through what is involved in making the switch and the issues needing consideration about before taking the leap.



## EVENT DETAILS

**When:** 13 July 2022

**Cost:** Free (RSVP essential)

**Time:** 10:00am - 4.00pm (morning tea, lunch and afternoon tea provided)

**Venue:** Hamilton Showgrounds (Shakespeare St, Hamilton VIC 3300)

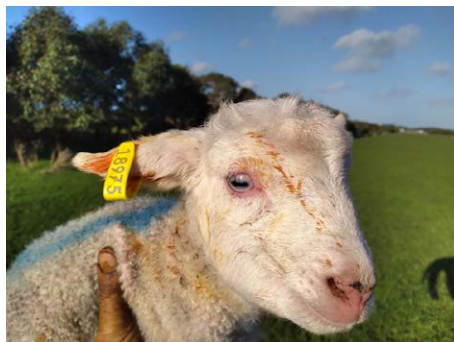
**Registration Essential:** Register via <https://meridian-ag.com.au/events/> or (03) 5341 6100 RSVP by 9th of July for catering

**Further Enquiries:** Please contact John Keiller 0409 804 638 or Andrew Speirs 0428 685 172.



# BECOMING A NUDIE

*The pros and cons of switching to shedding sheep*



## PROGRAM

### Wednesday 13 July 2022

Time	Item	Speaker
10:00am	Event registration and Welcome	Andrew Speirs <i>Meridian Agriculture</i>
10:30am	Comparing shedding sheep to maternal composites, the ways to convert to shedding sheep, and understanding and determining what do	John Keiller <i>Cashmore Park</i>
11:00am	Why he swapped to shedding sheep and the impacts on his business and management practices	Phillip O'Toole Farmer Hawkesdale
11.45am	Sheep genomics, performance recording and using indexes	Peta Bradley <i>MLA</i>
12:30pm	Lunch	
1:00pm	View sheep on site	
1:30pm	The red meat outlook: The impacts of COVID, Russia, China, FMD and Lumpy skin disease	Rob Herrmann <i>Mecardo</i>
2.15pm	How to strategically use quality data and what you should ask your supplier of genetics	Rob Banks Ex AGBU Manager
3:00pm	Panel Discussion Key questions for all speakers	
4.00pm	Event Close	



# BECOMING A NUDIE

## *The pros and cons of switching to shedding sheep*

### SPEAKERS

#### **John Keiller - Cashmore Park**



John Keiller is a partner in Cashmore Oaklea, a seedstock based business supplying Maternal, Terminal and Nudie rams to eastern Australia. The centre of the business is located at Cashmore Park, a 1600 ha property located 10 km west of Portland, Victoria in a 830 mm rainfall area running 25,000 DSE. Educated at Longerenong Agricultural College 1984-86, John developed an interest in sheep genetics which led to being an early adopter of performance recording with LAMBPLAN in 1990 and associated technologies. This discipline has been applied to terminal, self-replacing maternal and wool shedding sheep with an open approach to breed allowing access to a wide range of genes. With market research based on processor, consumer demand and farm benchmarking KPI's 'an easy care, fast growing sheep with 2 lambs' is selected for. This approach has seen Cashmore Oaklea sheep improve 3.5% per annum and be well favoured by industry. John is a past president of the Coopworth Sheep Society of Australia and Tarragal Landcare Group.

#### **Peta Bradley - Manager of sheep genetics (MLA)**



Peta is the Manager of Sheep Genetics with Meat and Livestock Australia (MLA) based in Armidale. Prior to this she had been working with the Sheep Genetics team as MERINOSELECT Development Officer then Senior Development Officer. Until recently she was the Project Manager of MLA's Livestock Genetics Portfolio. She completed a Bachelor of Rural Science at the University of New England in 2017, which included an honours project in the genetic parameter estimation of reproduction traits in sheep. Peta has been involved in technology development projects including the Sheep Genetics search site upgrade and most recently the Sheep Genetics database redevelopment. Peta grew up on a property near Armatree in Central West New South Wales where her family run a commercial and stud sheep operation alongside a cropping enterprise and has had extensive experience in the sheep and wool industry throughout her education/career.

#### **Phillip O'Toole - Director, UNE**



Phil O'Toole has operated as a Livestock farmer at Hawkesdale, Victoria for the last 50 years. The operation has been a family business for that time, now having the next generation, Phil's children, participating and investing in that business.

Phil has had industry input to quite a number of groups and businesses over that period, also actively participating in trial research initiatives.

Phil is committed to the advancement of Livestock agriculture and continues to be involved in its future.





# BECOMING A NUDIE

## *The pros and cons of switching to shedding sheep*

### SPEAKERS

#### **Robert Herrmann - Mecardo**



Robert Herrmann is the Managing Director of Mecardo, a specialist agricultural advisory business with its focus firmly on the financial enhancement of primary production and price risk management.

The company was established by Robert Herrmann in Adelaide in 1996 under the Ag Concepts Advisory brand. With a longstanding background in agriculture, Robert's commitment was to deliver a high-quality proactive risk analysis and advisory service to his clients.

Robert has more than forty years' experience in the agriculture service sector, he has also recently been appointed to the role of Agency, Market & Product Specialist for Nutrien Ag Solutions. He has been a board member of Sheep Producers Australia since October 2020.

#### **Robert Banks - Director, UNE**



Rob Banks has worked for many years on better breeding programs for a range of Australia's livestock industries, including helping start LAMBPLAN and MERINOSELECT. He has a passion for genetics, and for working with farmers to make sure breeding programs work and are cost-effective.

