

Introduction

This Pasture and Rainfall Report is for an area approximately 5km x 5km in size (regardless of property size), centred on the Lot on Plan nominated, indicated by the red crosshair symbol on the map below. This report includes a rainfall and pasture growth summary and graphs showing historical time series for: 1) monthly average pasture Total Standing Dry Matter (TSDM); 2) monthly average ground cover; 3) annual rainfall (April to March) and 4) annual pasture growth (April to March). Pasture TSDM, cover and growth are simulated using the GRASP/AussieGRASS model; accuracy may be limited by available stock number and climate data.

Summary

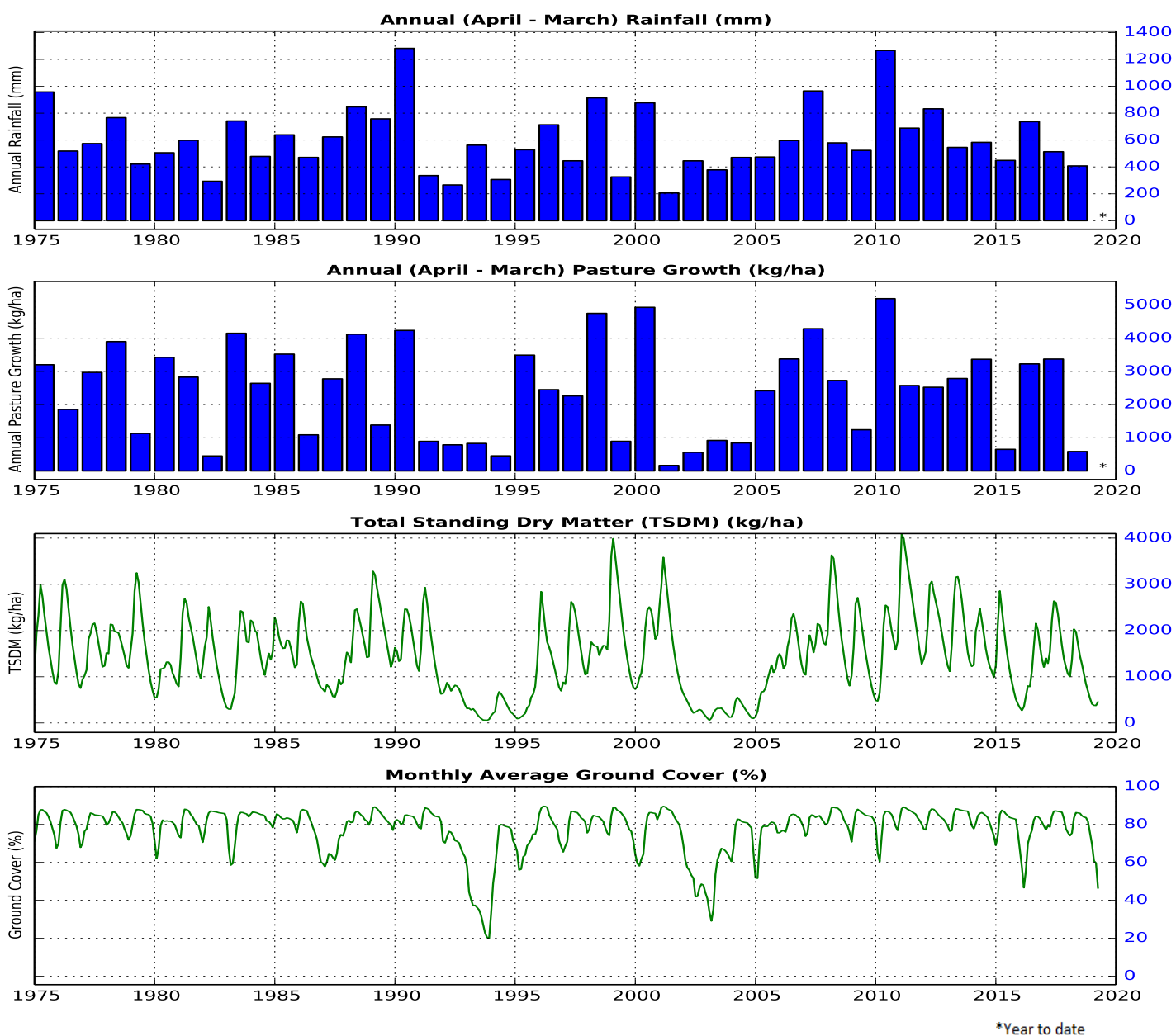
	Annual average	Total for last 12 months	Annual percentile*			
			10th (extremely low)	30th (low)	50th (median)	70th (high)
Rainfall (mm)	590	407	348	446	527	684
Simulated pasture growth (kg/ha)	2427	586	638	1448	2649	3215

*A percentile is used to indicate where a value lies within the range of historically measured records. For example, if last year's rainfall was ranked as the 30th percentile, then last year's rainfall was higher than the annual rainfall of 30% of the years in the record, but lower than the annual rainfall of the remaining 70% of the years

Location map



Historical time series



Disclaimer

Limitation of liability: the State of Queensland, as represented by the Department of Environment and Science (DES) gives no warranty in relation to the data (including without limitation, accuracy, reliability, completeness or fitness for a particular purpose). To the maximum extent permitted by applicable law, in no event shall DES be liable for any special, incidental, indirect, or consequential damages whatsoever (including, but not limited to, damages for loss of profits or confidential or other information, for business interruption, for personal injury, for loss of privacy, for failure to meet any duty including of good faith or of reasonable care, for negligence, and for any other pecuniary or other loss whatsoever including, without limitation, legal costs on a solicitor own client basis) arising out of, or in any way related to, the use of or inability to use the data. ©The State of Queensland, 2019.