

THE AUSTRALIAN LIVESTOCK EXPORT INDUSTRY

For further information visit: www.livecorp.com.au | www.mla.com.au



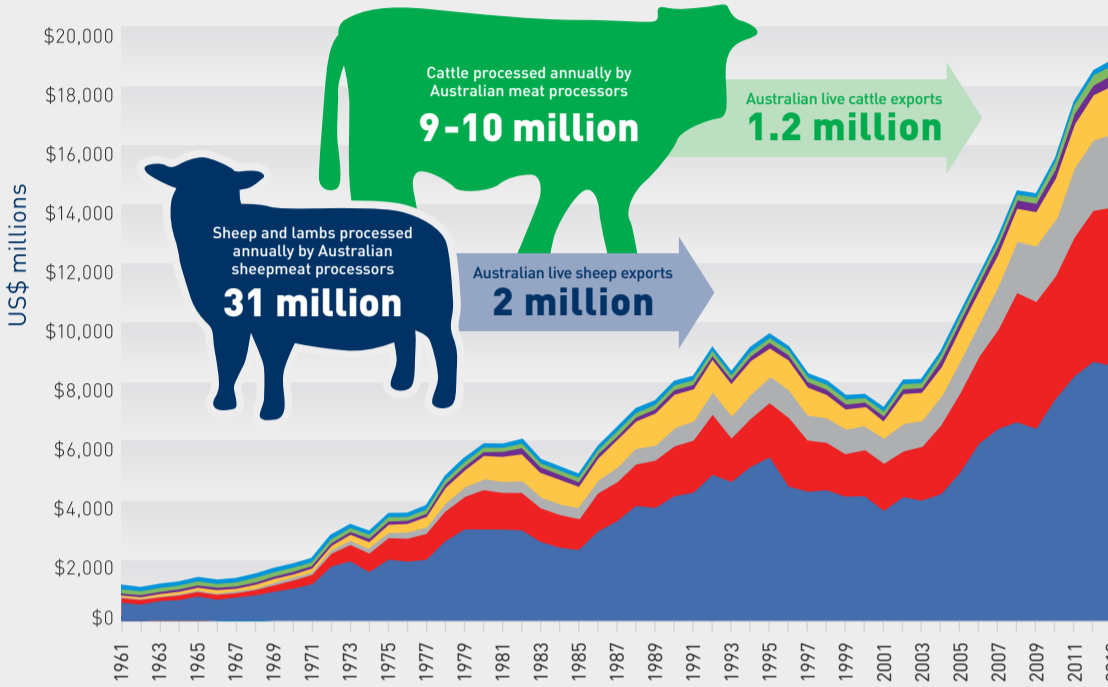
This research was undertaken by the Australian Farm Institute for the LiveCorp and MLA collaborative initiative, known as the Livestock Export Program (LEP) in 2017.

\$\$\$ Annual value of global livestock trade

Value of global livestock exports by species

US\$19 BILLION

AUSTRALIA US\$1.1 BILLION

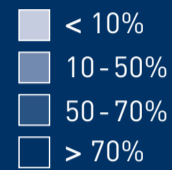


CATTLE	\$8,794m
PIGS	\$5,489m
CHICKENS	\$2,556m
SHEEP	\$1,681m
GOATS	\$323m
CAMELS	\$185m
BUFFALOES	\$67m



Australian cattle sold for live exports originate from regions which have very limited access to meat processing

Total farm receipts from the sale of cattle for live export



Location of Australian beef export abattoirs



The Australian livestock export sector **employs more than 10,000 people**, mostly in remote areas with little alternative employment, and many of these are indigenous Australians

STOPPING LIVE CATTLE EXPORTS would impose a net cost of \$200+ million per annum

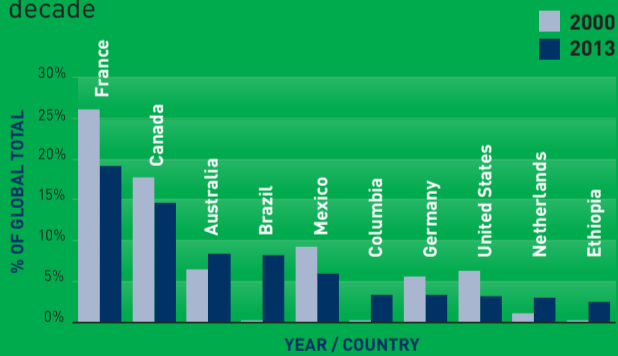
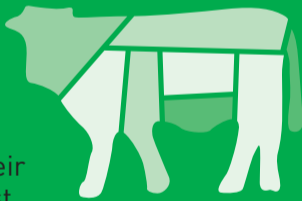
FARMER AND EXPORTER LOSSES were estimated at \$320 million per annum

BEEF PROCESSOR GAINS were estimated at \$108 million per annum (CIE 2011)

Live cattle exports market share

(10 MAJOR EXPORTING NATIONS)

Australia is the world's **third largest exporter** of live cattle, although South American nations have dramatically increased their market share over the past decade



Live sheep exports market share

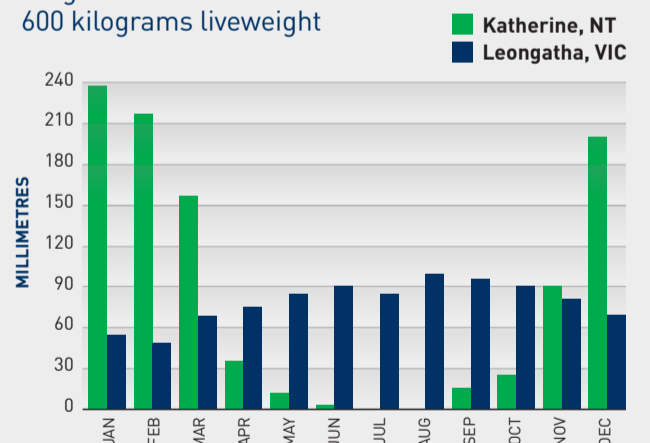
(10 MAJOR EXPORTING NATIONS)

Australia was the world's **biggest** exporter of live sheep in 2000, but has since lost market share due to increased regulatory costs and a reduced sheep flock. North African and European exporters have gained market share in recent years



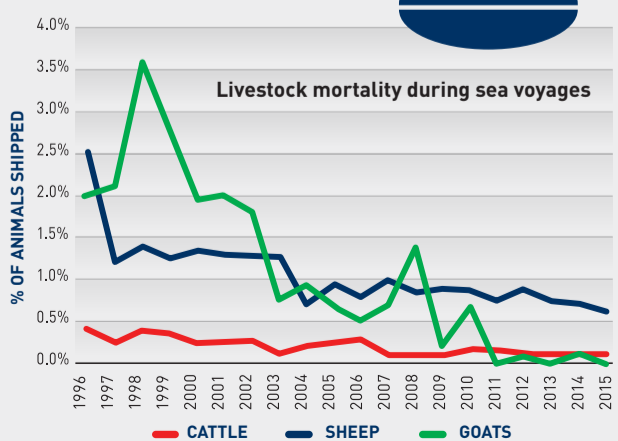
Same rainfall, different seasons

Seasonal pasture growth in northern Australia makes it very **difficult to finish cattle** to an economic slaughter weight of between 500 and 600 kilograms liveweight



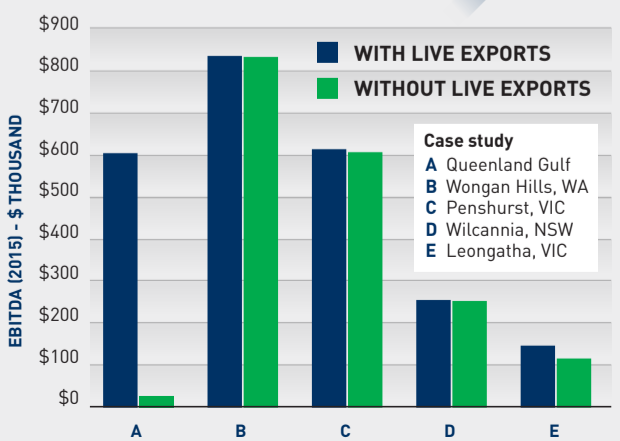
Mortality rates

Mortality rates during ocean transport have declined with better management and ship design. They are now below **normal farm rates**



Farm Profitability

Analysis showed that **live export** markets had a **positive** impact on the **profitability** of all five case study farms, but especially beef farms in northern Australia



Projected impact of stopping live cattle exports

